

KNOWN ISSUES

- This generic driver is compatible with most devices with Snapdragon X Series.
 - **Samsung Galaxy Book4 Edge** devices require BIOS version released after 07/05/2024.
 - **Lenovo Yoga Slim 7x/Yoga Air** devices require BIOS version v57 or higher.
 - Some devices may fail to install, be unstable, or have additional issues. Please rollback the driver to the default OEM provided version if so.
See the last section “**Uninstall Instructions**” for details.
- Review the **Installation Instructions (Page 3-5)** to ensure successful installation. **Manual Install 1 (Steps 7-11)** and **Manual Install 2 (Steps 12-17)** steps may be required after executing the installer.
- Some games that require AVX/AVX2 instructions are not supported on the Windows general release builds. Additionally, certain kernel driver anti-cheat solutions are currently not compatible. We are committed to enabling the Windows on Snapdragon game ecosystem and are working with our partners to ensure we resolve these issues.
- For users running Microsoft Windows 11 OS Build 26100.3915 and later, there is a known OS issue where some games will crash and freeze when plugging in or removing an external monitor or changing display mode and/or resolution. Qualcomm recommends updating to the latest version of Windows 11 via Windows Update when Microsoft releases a fix.

Games known to be affected are: Metro Exodus, Sid Meier’s Civilization VI, Borderlands, and Left 4 Dead 2.



CHANGELOG

This release notes lists changes from the previously released version, v31.0.133.2

Game Stability/Quality Improvements

- Baldur's Gate 3
- Control Ultimate Edition
- DIRT 5
- Doom + Doom II
- F1 22
- Fortnite
- Generation Zero
- Granblue Fantasy Versus: Rising
- Hogwarts Legacy
- Magic: The Gathering Arena
- Persona 5
- Red Dead Redemption 2
- REMNANT II
- Shadow of the Tomb Raider
- Sunset Overdrive
- Total War: WARHAMMER II
- Valheim

Game Performance Improvements

- FragPunk
- Genshin Impact
- Justice Online
- Undisputed

App Stability & Performance Improvements

- Figma
- Opera
- Vivaldi Browser

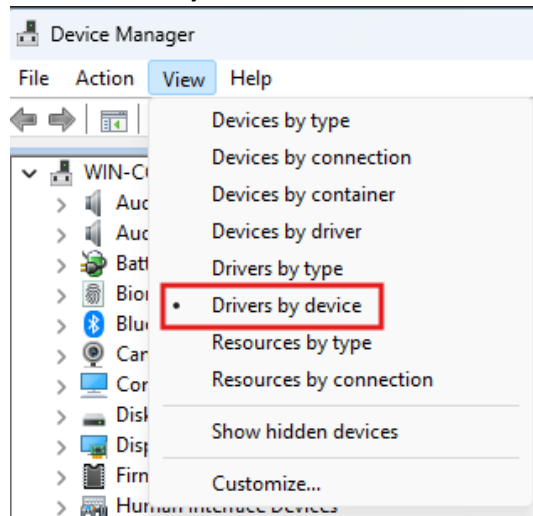
Display Improvements

- Fixed an issue on some USB docks where attached displays were occasionally not detected.

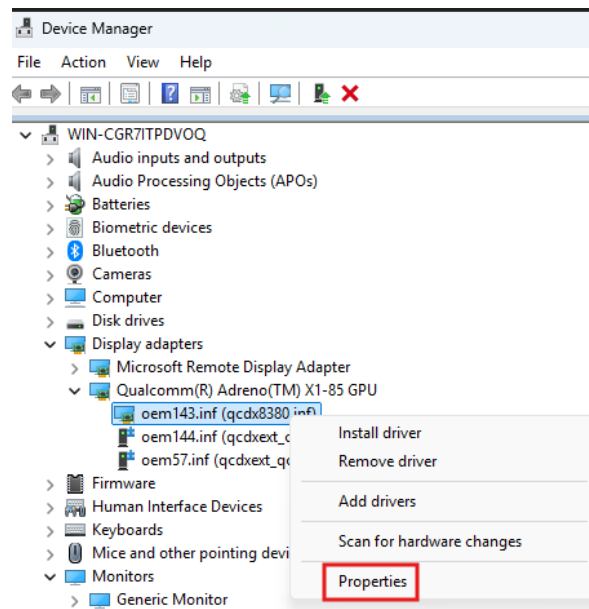


INSTALLATION INSTRUCTIONS

1. Download the driver from Qualcomm Software Center.
2. Run the **installer (.exe)** and proceed through the dialog screen.
3. Open **Device Manager** and view **“Drivers by device”**

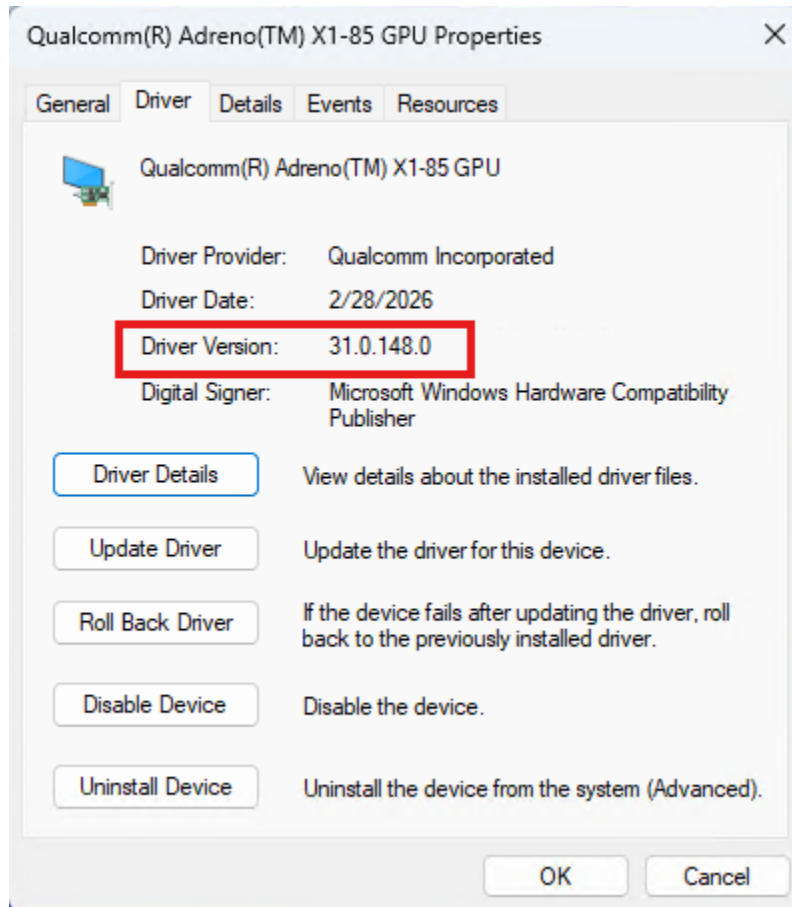


4. **Verify the Driver:** under **“Display adapters”**, right click on **“Qualcomm(R) Adreno(TM) X1-85 GPU”** and select **“Properties”**
 - a. Note: some devices may list **“Snapdragon(R) X Elite...”**, which can still be selected and updated. The name will be corrected with this driver.

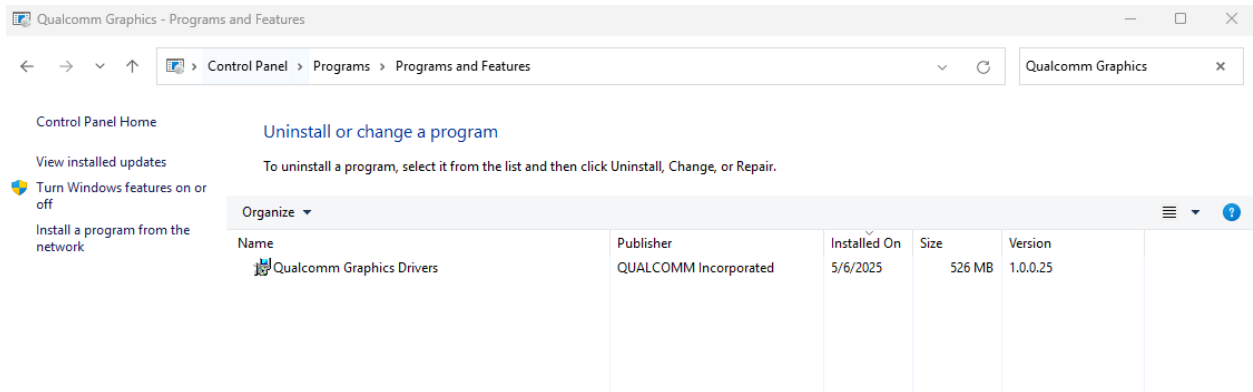


- b. To check the version of extension driver, follow the same procedure for `qcdxext_crd8380.inf`

5. Select the “**Driver**” tab and check the “**Driver Version**”

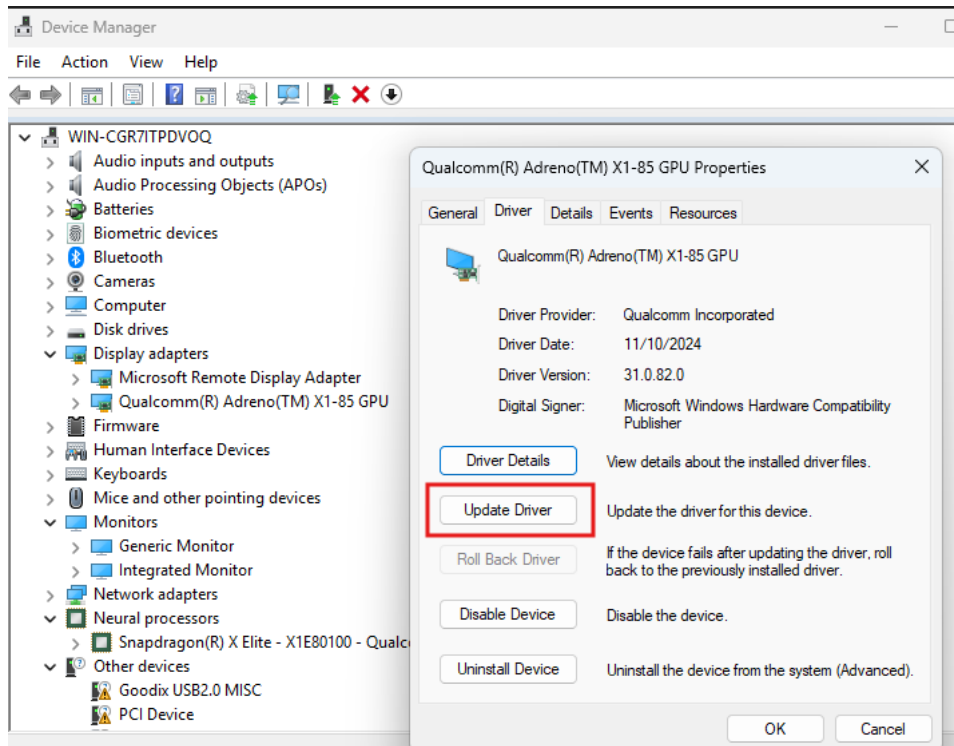


6. If “Driver Version” is “**31.0.148.0**”, then the driver was installed successfully, proceed to testing & reviewing the product. The control panel reflects the EXE version installed.

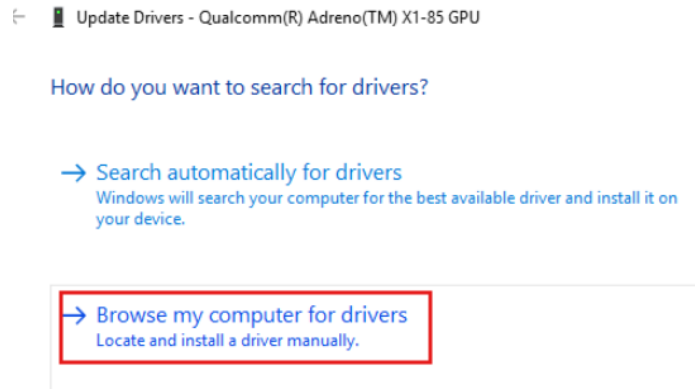


- a. If an older driver is listed, proceed to **Step 7**. Some OEM devices do not update with the installer and require **Manual Install 1** or **Manual Install 2** (see **Known Issues**).
7. **Manual Install 1:** Right click on “**Qualcomm(R) Adreno(TM) X1-85 GPU**” and select “**Update driver**”

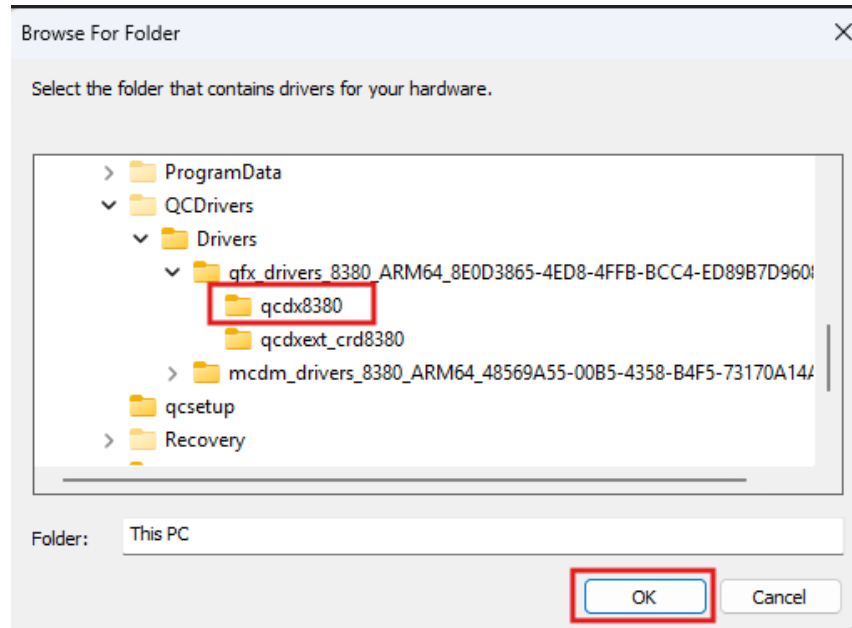
- a. Note: some devices may list “Snapdragon(R) X Elite...”, which can still be selected and updated. The name will be corrected with this driver.



8. Select “Browse my computer for drivers”



9. Browse to the “C:\QCDrivers\gfx_drivers_ARM64...” folder. If there are multiple “gfx_drivers_ARM64...” folders, select the newest one. If not already done, change your Explorer View to show hidden items. Select the **qcdx8380** subfolder.
 - a. If the folder is not present, jump to **Step 2** to extract the contents of the installer again



10. Click "OK" and then "Next" to install the driver. Close any dialog boxes that appear.
11. Verify the driver version (**Steps 4-6**).
 - a. If driver is still not updated, proceed to **Manual Install 2 (Step 12)**
12. **Manual Install 2:** perform **Step 7 & Step 8** to open the "Browse for drivers on your computer" window.
13. Select "Let me pick from a list of available drivers on my computer"

← Update Drivers - Qualcomm(R) Adreno(TM) X1-85 GPU

Browse for drivers on your computer

Search for drivers in this location:

C:\Users\HCKTest\Documents

Browse...

Include subfolders

→ Let me pick from a list of available drivers on my computer
This list will show available drivers compatible with the device, and all drivers in the same category as the device.

Next

Cancel

14. Select "Have Disk"

← Update Drivers - Qualcomm(R) Adreno(TM) X1-85 GPU

Select the device driver you want to install for this hardware.



Select the manufacturer and model of your hardware device and then click Next. If you have a disk that contains the driver you want to install, click Have Disk.

Show compatible hardware

Model

- Microsoft Basic Display Adapter
- Qualcomm(R) Adreno(TM) X1-85 GPU Version: 31.0.76.0 [9/25/2024]
- Qualcomm(R) Adreno(TM) X1-85 GPU Version: 31.0.82.0 [11/10/2024]

This driver is digitally signed.

[Tell me why driver signing is important](#)

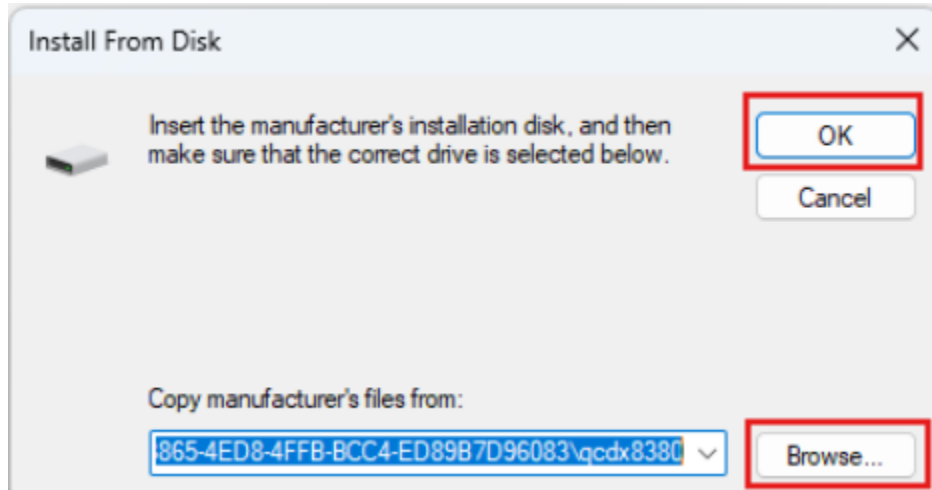
Have Disk...

Next

Cancel

- Click "**Browse**" and navigate to the "C:\QCDrivers\gfx_drivers_ARM64..." folder. If there are multiple "gfx_drivers_ARM64..." folders, open the newest one. If not already done, change your Explorer View to show hidden items. Select the **qcdx8380** subfolder and select "**qcdx8380.inf**"





16. Click **“OK”** and then **“Next”** to install the driver. You should get a “Windows has successfully updated your drivers” message.
17. Verify the driver version (**Steps 4-6**)

UNINSTALL INSTRUCTIONS

To rollback and uninstall this driver, open “Programs and Features” in the control panel, select “Qualcomm Graphics Drivers”, and click “Uninstall”. The driver will then be reverted to the OEM driver.

